



# MURRAY ARTS

Regional Arts Development



Clockwise from top: Limelight: Art. Science. Light. outdoor event © Manifeasto Photography, burraja gallery weaving workshop, Murray Arts team photos (Feb 2018), Kinder Kulture program

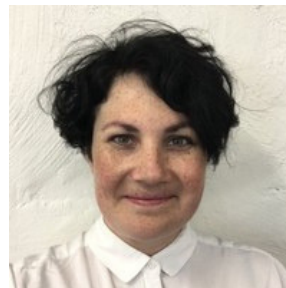
# ANNUAL REPORT

DIGITAL VERSION

2018

---

# WORD FROM THE CHAIR



As I reflect on another year as the Chair of Murray Arts, I can't help but be so proud of the artists that live and work in our region. It is a privilege for all of us on the board and in the staff of Murray Arts to be the under-arching support organisation that allows our local artists to dream big and flourish. This year we've been able to make some big changes to the organisation which sees us engage more broadly with the community through our Strategic Advisory Council and Board. Welcome and thank you to all of our fabulous new members!

The year started off with the launch of the refurbished burraja gallery. Under the guidance of our Aboriginal Arts Curator Bethany Thornber, burraja has doubled the number of artworks sold by our local Aboriginal artists in 2017 and almost tripled our total sales figures. I am thrilled that Murray Arts has been able to support the region's only Aboriginal gallery dedicated to supporting our local Aboriginal artists, and believe we are well on the way to achieving our dream of burraja gallery being self-sustainable and a stand-alone business in the future.

Our Aboriginal Arts Officer Tiffany Ward also continued to kick goals in 2018 with 147 pre-school kids engaging in our Kinder Kulture workshops for NAIDOC week, and performance of Then He Came

Home directed by well-known theatremaker Elaine Crombie of Black Comedy and Kiki and Kitty fame, starring alumni from the Black Border Theatre Ensemble.

It was fantastic to see so many local participants engage in the Billet Doux exhibition with over 103 works submitted from 37 local visual artists. And speaking of incredible local engagement, if you weren't at Limelight: Art – Science – Light in September, you missed out. This was an incredible night learning about and celebrating the pygmy perch through interactive film-making, fire art and projection, with over 400 people coming to Gateway Island to enjoy the evening.

A big thank you to everyone who made 2018 possible, particularly the many wonderful volunteers who gave up their time to support local artists – whether you donned high vis to guide patrons during Limelight, or got up a scaffold to paint the gallery, or are one of our Board members – thank you. We couldn't do this without you. Thank you, Alyce and all of the team, for your dedication and unwavering belief in the work of Murray Arts. Here's to another great year!

**TAHNI FROUDIST**  
CHAIR  
MURRAY ARTS

# EXECUTIVE DIRECTOR REPORT



2018 has seen Murray Arts kick some big goals off the to-do list. Adopting a New Constitution, shifting to a Skills-Based board and launching the Murray Arts Strategic Advisory Council.

The re-launch of burraja gallery was a mammoth effort for our small team. We spent most of January & February up a ladder or on the scaffold, covered in specks of paint, renovating in the hottest months of the year. All our hard work paid off with us unveiling the new space on 28 February with our first solo exhibition 'Sacred' by Peter Rowe (Lia Pootah). burraja gallery has continued to go from strength to strength thanks to Bethany Thornber (Wiradjuri) coming on board as the spaces Curator. Initiating an exhibition program, more than doubling our sales figures and dramatically increasing community engagement of the regions only dedicated Local Aboriginal Art Gallery.

Other highlights of 2018 were the piolet LIMELIGHT: Art - Science - Light event which saw over 400 people venture to Gateway Island amphitheatre to bask in the projection and light installations. And the now biennial Billet-Doux art prize held at the Albury LibraryMuseum which featured 103 entries, all 8X10 inches in size by 37 local visual artists and creating a diverse showcase of contemporary visual arts practices in our footprint.

Big thank you to the Murray Arts team, we once again managed to deliver an awesome artistic program, engage with each corner of our footprint and continue to be sort after by the greater community to respond to all the enquiries that fall under the Regional Arts Development banner.

Click below and watch our ' 2018 Wrap Video' which gives a snapshot of a year in the life of Murray Arts.



**ALYCE FISHER**  
EXECUTIVE DIRECTOR  
MURRAY ARTS

---

# THE BOARD

**Murray Arts is the Regional Arts Development Organisation (RADO) in the Border and North East Region and services six local government areas; AlburyCity, Greater Hume and Federation in NSW and City of Wodonga, Indigo and Towong in North East Victoria. Murray Arts is a not for profit incorporated association, governed by a volunteer Board.**

**Chair** Tahni Froudist (Secretary & Public Officer)  
**Deputy Chair** Diane Shephard  
**Treasurer** David Thurley  
Richard Hull  
Rachael Gadd  
Donna Caffrey  
David Gordon

Outgoing board members 2018:  
Jenni Star, Deborah Ross and Annette Schilg

Currently, there are two positions vacant.

## **Governance Update**

The Murray Arts Board: In 2018 Murray Arts shifted from a Representative to a 9 member Skills Based Board structure and adopted a New Constitution at our AGM on 26 April 2018. This move was due to a report and subsequent recommendations from Create NSW for the whole NSW Regional Arts Development Organisation network.

Murray Arts Strategic Advisory Council (MASAC): Part of the shift saw Murray Arts also launch MASAC, which is made up of, up to 10 representatives from across our footprint who help feed into our strategic direction and planning. Three spaces on the Murray Arts Board are reserved for MASAC members.

## **Our Inaugural MASAC Members are:**

Cr David Thurley - representative from AlburyCity  
Cr Diane Shephard - representatives from Indigo Shire Council  
Cr Gail Law - representatives from Federation Council  
Cr Annette Schilg - representative from Greater Hume Council  
Simone Hogg - representative from City of Wodonga  
Jenni Star - representative from Towong Council  
Julia Simpson - OGA Creative  
Dr Treahna Hamm - Yorta Yorta woman, member of burraja gallery Aboriginal Artist Network  
Daren Pope - Beechworth Arts Council

# THE STAFF

Alyce Fisher – Executive Director  
Bethany Thornber - Aboriginal Arts Curator - Emerging  
Kellie Sutherland - Communications Officer (from January 2018-August 2018)  
Julianna Toth - Communications Officer (from September 2018)  
Tiffany Ward - Aboriginal Arts Officer (from January 2018)  
Rod Bramuch - Sub-contracted bookkeeper  
Timeeka George - School Based Trainee (until February 2018)

---

# ABOUT MURRAY ARTS

Murray Arts believes in telling regional stories and sharing them. We believe our community has the capacity to produce great arts events, exhibitions and experiences. We work at a grassroots level using cultural development principles to collaborate with communities and artists, developing projects and ideas which support the identity and growth of our regional communities. We employ artists to work on our projects - giving them creative opportunities to develop and share their arts practice. We are always looking for new ways to build audiences, be creative and connect with our community.

## **we value**

Artistic endeavour, creativity, and integrity

The arts as a medium to challenge us and explore our humanity

The opportunity to participate and express ourselves

The opportunity to access, participate and express ourselves

Community wellbeing, connection and lifelong learning

**2016 -2020 Murray Arts Strategic Plan identifies five goals which underpin the operations of Murray Arts.**

Goal One: To be the central point of information and communication for the arts across the region

Goal Two: To forge strong partnerships with local government and other arts organisations

Goal Three: To build the capacity of artists and communities in the arts

Goal Four: To develop strategic projects of regional significance

Goal Five: To ensure the ongoing sustainability of Murray Arts



The Murray Arts team at Satch & Co for the 'Murray Arts End-of-year, Team Away Meeting'

---

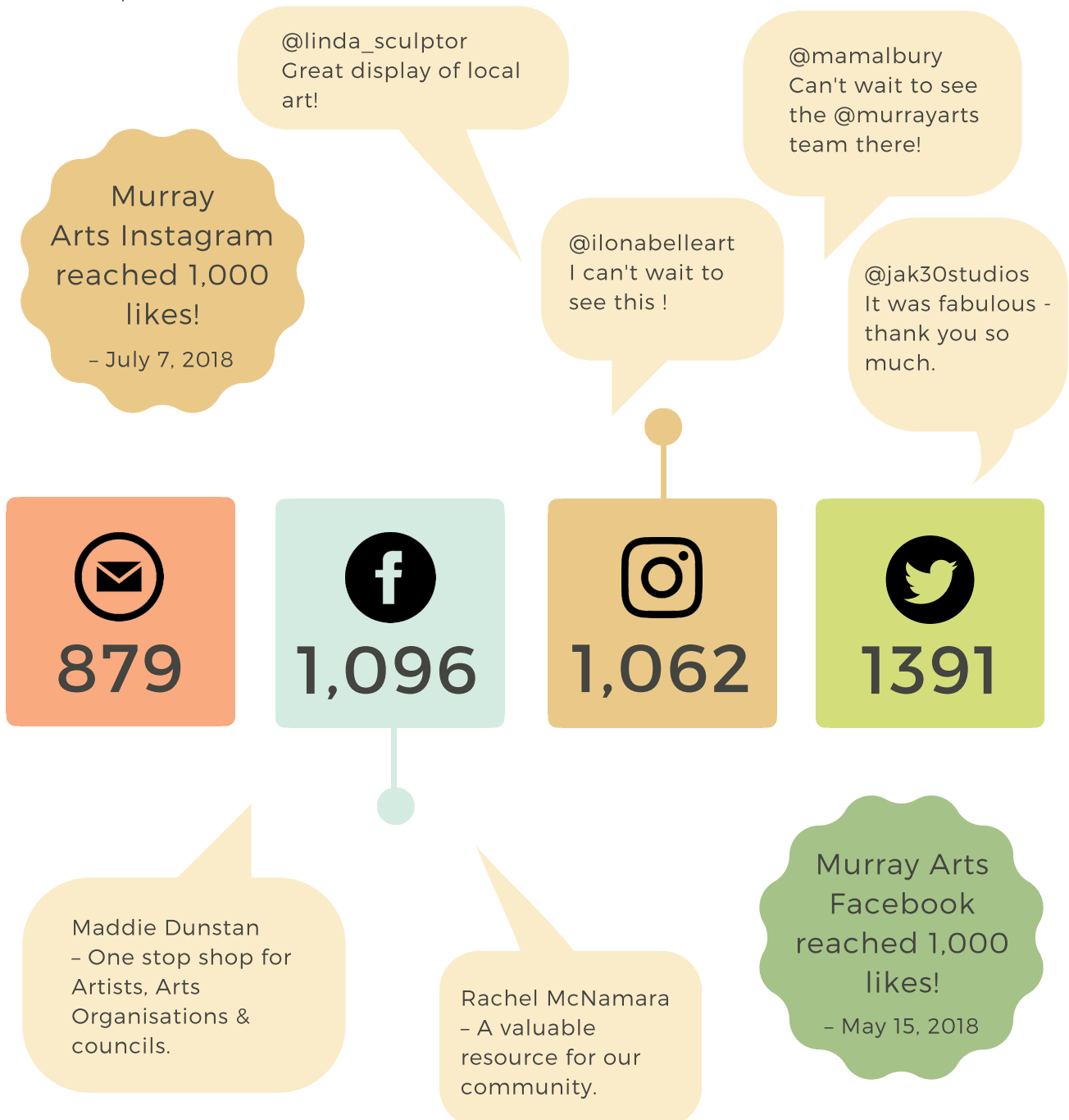
# COMMUNICATIONS

## Murray Arts

With an extensive newsletter subscriber base, as well as an active social media following, Murray Arts' communications is targeted, effective and well respected.

The Murray Arts newsletter is a comprehensive monthly publication of local arts news, grants and funding opportunities, artist profiles, jobs and events. Local arts organisations and art workers have informed us that they will often point people in the direction of Murray Arts and especially the newsletter. The newsletter is popular, enjoying above the average industry standards for open and click rates, demonstrating our reputation as the "one-stop shop" for all arts-related information in the region.

Murray Arts social media following is active and positive, engaging in call-to-actions and competitions run on all platforms.



---

## burraja gallery

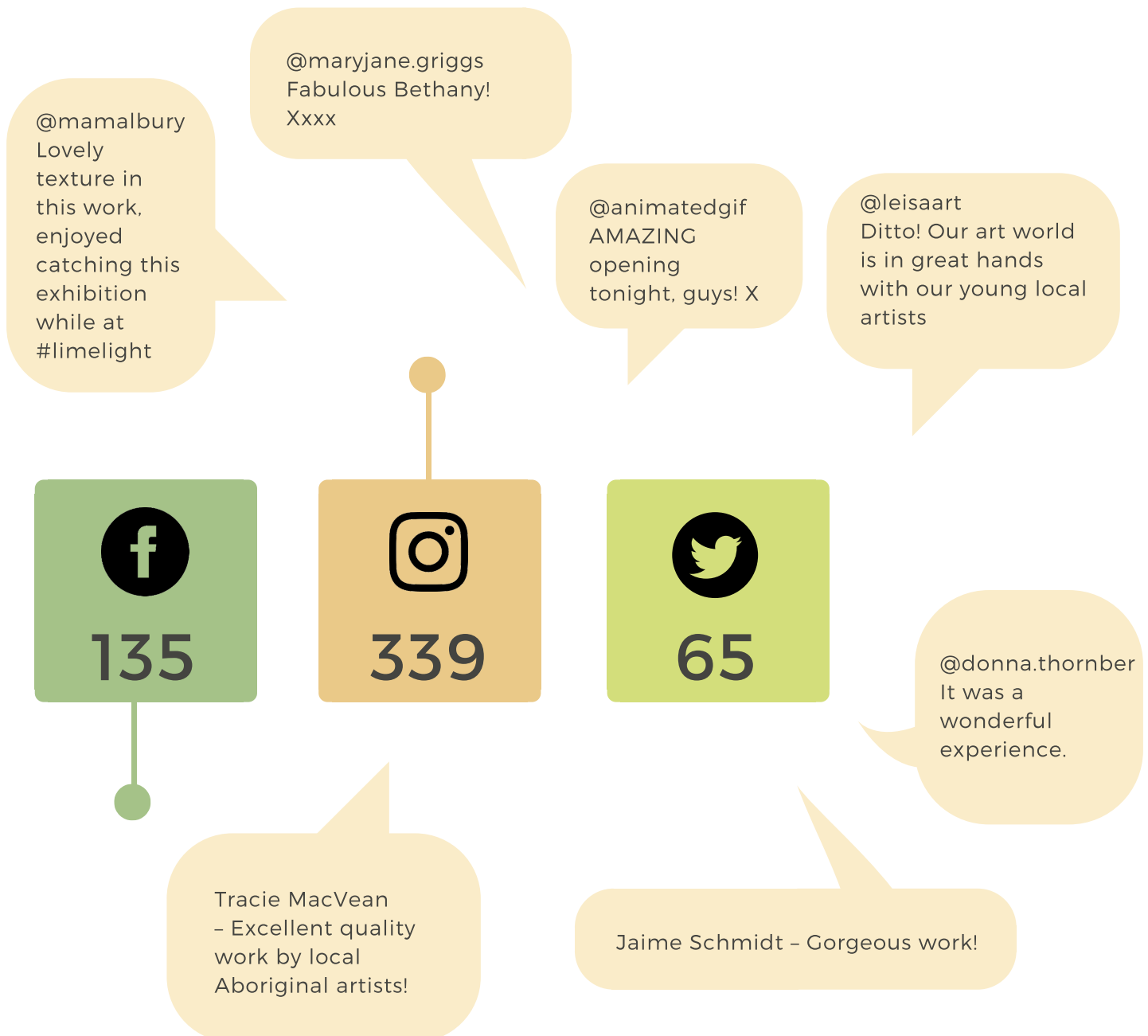
Communications for burraja gallery are unique and distinct from Murray Arts'.

burraja gallery shares the same engaged newsletter subscriber base as Murray Arts. However, burraja gallery has its own unique social media audience – including a supportive Aboriginal artist email network that actively engages with gallery events, local opportunities and news.

burraja gallery's social media audience is similar to Murray Arts', with only a few distinctions: a younger demographic (25-34 years old), more popular with women (82%), and with people located in Albury (Sydney second rather than Melbourne).

Focusing on corporate branding and developing a strong business identity for burraja gallery will assist in pushing sales – this could be made possible by marketing artwork from an online store to hotels, corporate spaces, offices and/or private homes of notable individuals.

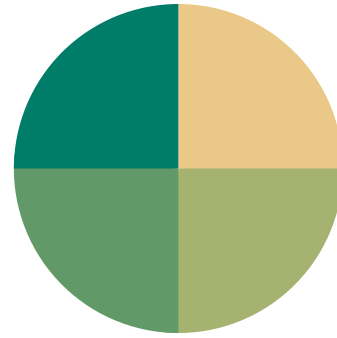
In 2018, a Twitter, LinkedIn and website landing page has been created for burraja gallery to reach new audiences and emphasise its independence from Murray Arts.



---

The Murray Arts Artistic Program is centered on four key areas:

- Regional Arts Development
- Aboriginal Arts Development
- Capacity Building
- Core Service Delivery



# REGIONAL ARTS DEVELOPMENT

## Key deliverables

GOAL	ACTUAL
Partner with Performing Arts Organisation to tour workshops/performance part of Cargo - Art in Transit	The evolution of Cargo - Art in Transit is the various Pop-Up exhibition we are called upon to deliver as part of our burraja gallery program.
Commission two activities as part of Circuit program	As an organisation we decided to run Billet Doux - small artprize (delivered in 2018) and Circuit (open studio's program) in alternate years. We see this as a more sustainable approach for both initiatives.
Seek a partnership with a major Science Hub	Launched LIMELIGHT: Art - Science - Light which was a pilot Art & Science themed light sound and projection event on Gateway Island.
Implement arts-based publication	We developed and delivered Beyond YOLO - a podcast sharing stories based on local stories of youth resilience in the here and now.



## LIMELIGHT: Art - Science - Light

This pilot event was held at the Gateway Island Amphitheatre Thursday 20 September and attracted over 400 people. Murray Arts, as the Murray Science Hub in the NSW Inspiring Australia network, embarked on a journey to highlight the plight of the local Pygmy Perch Population. We worked in partnership with local scientist and Pygmy Perch champion Luke Pearce and artists Helen Newman, Kirrily Anderson, Nina Edwards and Adam Boon to develop an immersive interactive Pygmy Perch 360 film. The 360 projection film was the highlight of the LIMELIGHT event which also saw artists Michael Laubli, Dr Greg Pritchard and Tracie McVean illuminate the darkness with their installations.

The success of this pilot event was splendid, and our aim is to make it an annual event as part of our role as The Murray Science Hub. A huge thank you to the Gateway Village tenants and the event's volunteers, we really couldn't have done it without your amazing generosity of time and spirit; Olwen Steel, Lyn Wallace, Kathryn Pyle, Tim Hoffman, Treahna Hamm, Beck Palmer and Maureen Guy.



Top, down: Pygmy Perch 360° Projection and Limelight staff & volunteers.  
Photo: Manifeasto Photography

# Limelight

Art. Science. Light

6.30-8.30pm

Thursday, 20 September,

Gateway Village on Lincoln

A FREE event for all the family



## TESTIMONIALS

*"Limelight" last evening. We both enjoyed the whole experience. Please congratulate all of your contributing artists and volunteers. It was a relaxed and informative evening which I can see has the potential to become an iconic event on the border. Well done and thank you once again." - Susan and Don Leayr*

*"Congratulations on an awesome event! I was swooning over Pygmy Perch 360." - Kellie Sutherland*

*"Congratulations to you and your team on the wonderful 'Limelight' event. We specifically altered our itinerary to attend the event on our way from Brisbane to Geelong and were not disappointed." - Karenlee Thompson*

*"Liquid gold! Limelight Murray Arts Bravo #nailedit Thanks Murray Arts what a sensational, mesmerising visual feast Limelight was last night! Looking forward to the next brilliant science and art experience!" - Carolyn Doyle*

*"It was a very useful tool to increase the awareness not only of the plight of pygmy perch, but river and wetland health more generally. It was great that it reached a completely different audience than we would reach via our normal engagement." - Luke Pearce*

## BILLET-DOUX

Murray Arts presented Billet Doux; an open entry contemporary, non-acquisitive, art prize and exhibition of small-scale artworks. This was the second time we have run the art prize, first was in 2016 and our plan is to cement it as a biennial exhibition. It took place at the LibraryMuseum Albury 29 Sept - 2 December 2018 and featured 103 works by 37 local Visual Artists.

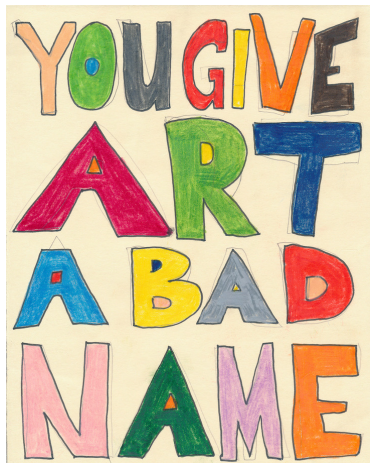
Billet Doux translates to "sweet note". Billet Doux aims to showcase the work of local artists at all stages of their career in miniature form!

Melbourne based writer and curator of contemporary art Brigid Hansen was the guest judge.



The 2018 Billet-Doux Exhibition space  
Photo: Albury LibraryMuseum

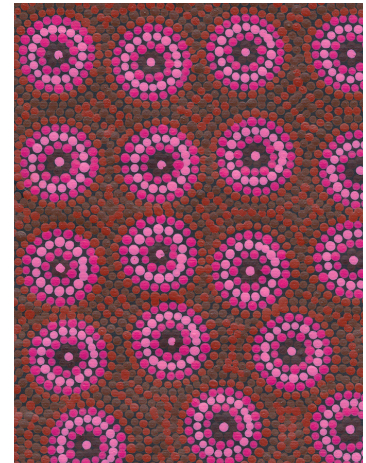
## THE WINNERS OF BILLET-DOUX 2018



'Untitled' (Culpable) From the Series 'Thought Put Loud' 2D13-  
Present by Ashlee Laing



'Leap of Faith' by Abi Thompson



'Desert Rose' by Stephen Berger

On top of the winners of Billet Doux, we received a whopping 926 votes for the sort after People's Choice award and ended up with THREE winners:

- 'Sacred King Fisher' by Rebecca Smalley
- 'High Summer' by Paula Watson
- 'Our Guni Country' by Trish Cerminara

"Great display of local art!" - Linda Fish

"Fabulous showcase of such diverse local artists!" - Alison Percy

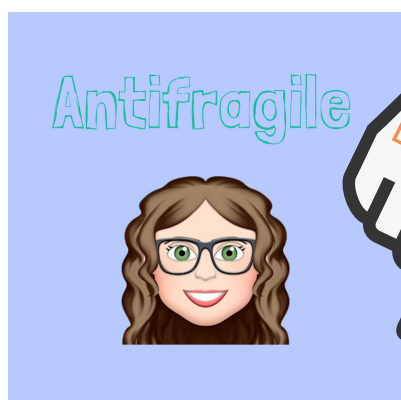
## BEYOND YOLO: YOUTH RESILIENCE PODCAST SERIES

Beyond YOLO unearthed young people's real-life stories of strength and resilience – unravelling here and now in the Border North-East region. The podcast series follows the distinctive interpretations of what it means to live as a young person and the unique challenges that arise.

Local writers, producers & storytellers Aimee Chan, Kate Rotherham, Alison Plasto, Tony Grace and Kyle Walmsley worked with local young people to uncover stories of youth resilience and create this locally produced podcast series.

Sheridan, Daniel and Tyson shared their challenges, growth and strength as they shape their futures – also Henry Rotherham, Forrest Dickinson and Rachel McNamara lent their voices to the series. Click below to start listening to their stories.

### LISTEN TO THEIR STORIES



Recording 'Beyond YOLO' podcast introductions. Pictured: Kate Rotherham, Henry Rotherham, Forrest Dickinson, Allison Plasto  
Photo: Allison Plasto

# ABORIGINAL ARTS DEVELOPMENT

A major focus for Murray Arts is Aboriginal Arts Development; we have an established Aboriginal Artist Network which supports artists in each stage of their artistic journeys as well as forging connections through art to our greater community. Murray Arts is humbled to have gained the reputation as the go-to organisation for all enquires relating to local Aboriginal Arts Development. In 2018 we delivered a variety of projects and forged some new partnerships under our Aboriginal Arts Development umbrella.

## Key deliverables

GOALS	ACTUALS
One Annual Exhibition for Aboriginal Artists Network	Outside of the burraja gallery exhibition program we also engaged in: <ul style="list-style-type: none"> <li>· North East Water Annual Exhibition Commission</li> <li>· Pop-Up exhibitions at QE11 Square Twilight Market and The International Fish Passage Conference in Albury</li> </ul>
Fund a residency program for Aboriginal Artists	<ul style="list-style-type: none"> <li>· Employment secured for Bethany Thornber (Wiradjuri) as the Curator of burraja gallery.</li> <li>· Dr Treahna Hamm (Yorta Yorta) engaged as the mentor for the Because of Her, We Can printmaking workshops for 9 local female Aboriginal Artists.</li> <li>· Kinder Kulture - workshops</li> <li>· Elaine Crombie (Pitjanjtajtarra, Warrigmal, South Sea Islander) made her directorial debut directing 'Then He Came Home' with Black Border Alumni</li> </ul>
Continue to support the operations of Aboriginal Artists Enterprise	burraja gallery re-launched in February 2018, initiated an exhibition program and more than doubled its annual sales. The region's only dedicated Local Aboriginal Gallery.

## burraja gallery

burraja gallery is the only dedicated local Aboriginal art gallery in the border region. We advocate for all Aboriginal artists who live, work or connect locally, and provide an opportunity for dialogue and connection between the wider community and our Aboriginal community. Our modern and light exhibition space showcases the diversity of local contemporary Aboriginal art. In 2018 Curator Bethany Thornber initiated an exhibition program for the gallery, along with exhibition openings, artist talks and professional development opportunities.



Right to left: burraja gallery renovations; Bethany Thornber and Tiffany Ward Aboriginal Arts development team; NAIDOC catering; and burraja gallery relaunch



### Exhibition One: 28 February - 27 April 2018

SOLO: 'Sacred' by Peter Rowe (Lia Pootah)

Peter Rowe is a Lia Pootah (Tasmania) artist, who lives and works in Wodonga. 'Sacred' was a collection of mixed media work, which contemplated our inherent accountability to the land we live on. The works are a thoughtful union of photography and painting based on the Thylacine rock art at Yeddonba Aboriginal Cultural Site in the Chiltern-Mt Pilot National Park. "This is a personal project formed from many years of spiritual contemplation around this site." The works are as powerful as they are subtle and offer a poignant lesson about the cause and effect of land treatment.



Peter Rowe in front of his works from 'Sacred'

Collections Exhibition Space Featured work by: Phil Murray (Yorta Yorta), Dr Trehna Hamm (Yorta Yorta), Marg Murray (Barkindji) & Tammy Campbell (Wiradjuri)

## TESTIMONIALS

"Congratulations! Wonderful opening exhibition + event – I'll call in again very soon!!" - Alison Percy

"Fantastic Launch & beautiful wine." - Brenda Kausche

"I really enjoyed that event." - Denise Ezzy



Curator Bethany Thornber  
& Artist Stephen Berger

### Exhibition Two: 3 May - 6 July 2018

SOLO: 'My Alice' by Stephen Berger (Central Arrente)

'My Alice' was a collection of paintings by Central Arrente artist Stephen Berger investigating his intimate recollections of the desert landscapes of Alice Springs and surrounds. His disciplined practice of repetitive mark making is meditative and technical; in this, however, can be found a sense of reprieve and lightness engulfing the observer into his contemplative world.

Collections Exhibition Space Featured work by: Phil Murray(Yorta Yorta), Tamara Murray (Barkindji), Marg Murray (Barkindji), Rhonda Bowers (Ngiyampaa) & Trish Cerminara (Gamilaroi)

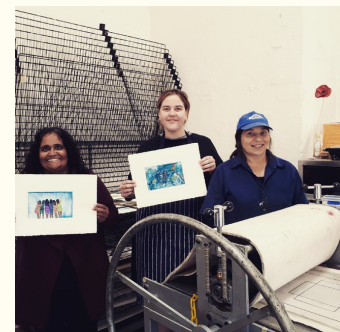
## TESTIMONIAL

"Great Exhibition." - MAMA Albury

### Exhibition Three: 12 July - 7 September 2018

Group NAIDOC 'Because of Her, We Can' printmaking exhibition

NAIDOC Week 2018 celebrated the invaluable contributions that Aboriginal and Torres Strait Islander women have made – and continue to make - to our communities, our families, our rich history and to our nation. Inspired by this, burraja gallery and Murray Arts delivered printmaking workshops, open to our local Aboriginal female artists. Facilitated by artist Dr Trehna Hamm, the workshops invited local Aboriginal women to gather, share stories, develop skills and collaborate. The artists partook in an



Marg Murray, Bethany Thornber and Trehna Hamm

exchange of traditional women's business covering the effects of cultural background and history, as well as their health and wellbeing as Aboriginal women. These are the prints that were created during the workshops.

'Because of Her, We Can!' 12 July – 05 September, featured work by Tammy Campbell (Wiradjuri), Trish Cerminara (Gamilaroi), Maggih Coates (Ganai/Dhudhuroa) Marg Murray (Barkindji), Tammy Murray (Yorta Yorta), Jenny Nelson (Boandik/Bunganditji), Marlene Plunkett (Boandik/Bunganditji), Bethany Thornber (Wiradjuri)

Collections Exhibition Space Featured work by: Phil Murray (Yorta Yorta), Marg Murray (Barkindji) & Trish Cerminara (Gamilaroi)



James Fallon Wiradjuri Dance Troop at Opening (credit Nina Machielse Hunt)



Because of Her, We Can exhibition prints

## TESTIMONIALS

"Fantastic event thank you." - Nina Machielsehunt

"Lovely Celebration." - Linda Fish

"Fantastic night. Thank you!" - Donna Thornber

"Just beautiful...Your great grandmother would be proud." - Donna Thornber

"I love this so much!" - Bobby Whybrow



'Strength' (detail), Acrylic on Canvas 2018

## Exhibition Four: 13 September – 02 November

SOLO: 'Two Strengths' by Tamara Murray (Barkindji)

Inspired by the artist's "two strengths", her art and her children, 'Two Strengths' symbolised Tamara Murray's move towards an unrestricted expression of mark making; the taking of a deep breath as she explores new gestures and line. In these works, the viewer can sense the loosening of her hand as it moves across the canvas in a symphony of colour and organic form.

Collections Exhibition Space Featured work by: Phil Murray (Yorta Yorta), Marg Murray (Barkindji), Trish Cerminara (Gamilaroi) & David Dunn (Wiradjuri) and

Marlene Plunkett (Boandik/Bunganditji)

## TESTIMONIALS

*"Lovely texture in this work, enjoyed catching this exhibition while at #limelight." - MAMA Albury*

### **Exhibition Five: 02 November - 17 December 2018**

'kangwano' (Dhudhuroa meaning: state/time of being young) was group exhibition featuring work by our regions Koori Youth

The exhibition provided an important opportunity for the young voices of our local Aboriginal communities to be heard - and for our wider community to engage with the thoughts, feelings and identities within this vibrant group of local Indigenous youth.

Artists: Hailey Plunkett Border Christian College Age 14 (Boandik Nation), Brandon Wright Beechworth Secondary College Age 17, Daytona Turnbull Murray High School Age 12 (Gamilaroi), Kiana Toovey Wodonga Flexible Learning Centre Age 15 (Kullali), Sophie Galvin Wodonga Middle Years - Huon Campus Age 15, Shauna-Lee Stewart James Fallon High School Age 16 (Wiradjuri), Dekoda Burnes James Fallon High School Age 14, Abigail Nelson Border Christian College (Boandik Nation), Malachi Wighton James Fallon High School Age 16, Vera Kennedy James Fallon High School Age 14 Malyangapa & Barkindji), Halle Murray Glenroy Public School Age 10 (Yorta Yorta), Ben McDonald Wodonga Flexible Learning Centre Age 17

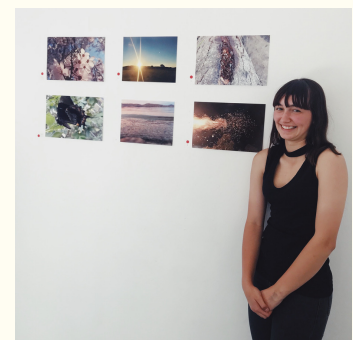
Collections Exhibition Space Featured work by: Phil Murray (Yorta Yorta), Marg Murray (Barkindji) & Trish Cerminara (Gamilaroi)

## TESTIMONIALS

*"Amazing opening tonight, guys!" - Anni Gifford*

*"Gorgeous work!" - Jaime Schmidt*

*"Thank you Murray Arts for sharing the burraja gallery story! From migraine yellow walls to a highly polished exhibition space." - Caz Doyle*



'kangwano' artist Hailey Plunkett



'kangwano' artist and People's Choice Award winner Ben McDonald



## PROFESSIONAL DEVELOPMENT

### Because of Her, We Can Printmaking Workshop

In response to the 2018 NAIDOC theme burraja gallery engaged Dr Trehna Hamm (Yorta Yorta) to deliver two weekend-long workshops, at Creators Artspace, sharing printmaking techniques with 10 local Aboriginal women. The outcome of this workshop was the NAIDOC Because of Her, We Can exhibition in burraja gallery. This workshop was made possible thanks to funding from the Create NSW Quick Response - Aboriginal Arts Project Fund.



Pictured: Tammy Campbell, Trish Ceminara, Maggih Coates, Trehna Hamm, Jenny Nelson, Marleine Plunkett, Valda Murray

### Weaving

Thanks to funding from CSU we were able to engage local master weavers Marg Murray (Barkindji) & Katie Schilg (Ngiyampaa) to run workshops sharing their knowledge of traditional weaving practices. These workshops were for members of our greater local Aboriginal community and we are hoping the participant's efforts will form an exhibition of weaving at burraja gallery in 2019.



Weaving workshop

### TESTIMONIAL

*"It was a wonderful experience". - Donna Thornber*

### South East Aboriginal Arts Market - Carriage Works Sydney

burraja gallery was invited to hold a stall showcasing the original prints created as part of the 'Because of Her, We Can' printmaking workshop and exhibition. The market was open over the 6-7 October 2018.



burraja gallery stall at South East Aboriginal Arts Market

## Kinder Kulture Workshops

Our extremely popular and sort after Kinder Kulture workshops deliver an authentic Aboriginal Cultural experience. Local Aboriginal Artists Bethany Thornber (Waradjuri) & Dr Treahna Hamm (Yorta Yorta) delivered the program to 9 pre-schools/kindergartens, with a total of 147 participants, in the Murray Arts Footprint as part of this program.

### 9 WORKSHOPS AND 147 PARTICIPANTS IN TOTAL

- Country Buddies – August – 19 participants
- Moorefield Park Child Care – August – 10 participants
- Spring Dale Heights – July – 32 participants
- Peekaboo Corryong – July – 9 participants
- Culcairn - July – 13 participants
- Mulwala – July – 16 participants
- Bellbridge – August – 10 participants
- Albury Children’s Centre – August – 20 participants
- Kinfolk Albury – 18 participants



Kinder Kulture workshops with Treahna Hamm and Bethany Thornber

## TESIMONIALS

*"Thanks again for arranging the Kinder Kulture program for Kinfolk. It was a great success." – Tara Case, Kinfolk*

*"Thanks for this morning, I believe the children did enjoy the experience" – Laura Fulford, Murray Children’s Centre*

## North East Water Annual Local Aboriginal Acquisitional Art Prize & Exhibition

We again assisted North East Water with their annual local Aboriginal acquisitional art prize & exhibition. In 2018 8 artworks were entered and Stephen Berger (Central Arrente) took out the acquisitional art prize with his entry ‘Gecko’s Dreaming’ which will now be added to North East Water’s permanent collection.



Bethany Thornber opening North East Water Annual Local Aboriginal Acquisitional Art Prize

# CAPACITY BUILDING

As a grassroots organisation, Murray Arts understands the obstacles that inhibit our community. Through the Capacity Building programs we delivered in 2018, we provided our wide and diverse community with opportunities to strengthen skills and enhance abilities.

## Key deliverables

GOALS	ACTUALS
Deliver 6 workshops as part of AMITC Program	Delivered 3 workshops. Reduced service due to AMITC the country house renovations
Deliver School Drama™ program in three schools	Delivered in 5 schools - to 8 teachers
Deliver 2 workshops in conjunction with performing arts centre	Unable to deliver
Deliver professional development program	Delivered - Smart Arts & Funding WS

## School Drama™

A revolutionary partnership between Sydney Theatre Company, Murray Arts and HotHouse Theatre has seen the School Drama™ program delivered to teachers, right in the heart of their classrooms! School Drama™ is a professional learning program with a difference for Primary School Teachers focused on English & Literacy. Our local Teaching Artists embark on a unique co-mentoring partnership with a teacher, for seven weeks. Sydney Theatre Company again strengthened their commitment to the program in 2018 with five schools completing the program, Mitta Mitta Primary School, Scots Albury, Talgarno Primary, Trinity College & Belvoir Special School. The program employed two local performing artists as the Teaching Artists, Rachel McNamara and Alyson Evans.

"School Drama was awesome. It made such a difference to my teaching" - Noela McGuffie, Talgarno Primary School



Teaching artist Rachel McNamara at Talgarno Primary School. Photo: Alyce Fisher

## PROFESSIONAL DEVELOPMENT & EDUCATION OPPORTUNITIES

### A Month in the Country (AMITC)

Our partnership with Hot House Theatre & AlburyCity which see's us work with AMITC resident artists to deliver sought after community workshops. In 2018 we delivered 3 workshops to a total of 55 participants. Lana Schwarcz delivered a Shadow Pupperty workshop to Howlong Public School, Julian Larnach, Tessa Leong & Vaishnavi Suryaprakash delivered a Characterisation workshop at Chiltern Primary School and re:group performance collective delivered a open community workshop in Live Cinema techniques at the AMITC House.

WORKSHOPS

4

PARTICIPANTS

55



### TESTIMONIAL

*"Yesterday I attended an incredible workshop on Live Cinema which was run by regroup performance collective. It was so interesting to learn about the steps involved to create this experience..... The other thing I am super excited to report is that I honestly think this is the most inclusive arts workshop I have ever attended." - Micaela Schmidt*

### SMART ARTS

Our partnership with City of Wodonga saw us deliver a FREE professional development program for our greater arts community. In 2018 64 engaged in these opportunities:



#### **Collaborate or Bust: creating together**

Presented by Suzanne Derry from the Arts Law Centre of Australia. Saturday 12 May – 19 attended.

#### **Growing up: legal issues for expanding creative practices**

Presented by Suzanne Derry from Arts Law Centre of Australia. Saturday 21 July – 13 attended.

## Creative Experience Forum - How to reach your audiences through Experiences

Globally there has been a real shift with tourists and consumers seeking unique experiences. We are more connected than ever in the digital sense but as consumers are seeking an authentic connection. During the forum we highlighted local success stories that have integrated experiences into their program models. What has worked? What failed? And what are our future opportunities? Hosted by Murray Arts Executive Director the forum featured insights by local creatives Ashlee Laing from Building Art On Walls in Tallangatta, Alyson Evans & Narelle Vogel from Hidden Cinema AlburyCity and Vic McEwan from The Cad Factory Narrandera. Thursday 7 June 2018 - 32 people attended.

### CREATIVE EXPERIENCE FORUM

Went on to be presented at the Regional Arts NSW ArtState Bathurst Conference. A modified version was delivered by Alyce Fisher and Alyson Evans to much acclaim.

- Saturday 3 November 2018

*"Thanks for the opportunity to attend yesterday's creative experiences forum. I really enjoyed it – great speakers, lots of insights and inspiration! Hopefully more events like this to come." - Natasha Childs, Department of Environment & Heritage*



Alyce Fisher and Alyson Evans at Creative Experience Forum in Bathurst

## Arts Funding Information Session & Workshops

Alyce Fisher, the Executive Director of Murray Arts presented 1.5 hours, FREE, Arts Funding Grant Writing Workshop focused on CASP and Regional Arts Funds rounds. Many other options for where to seek funding from and hot tips for grant writing, in general, were also covered.

### Albury LibraryMuseum

Wednesday 4 July - 22 attended

### Federation Council Corowa

Thursday 5 July 2018 - 9 attended

### Federation Council Corowa

Friday 6 July 2018 - 10 attended

## TESTIMONIAL

*"A short email to say thank you for your interesting and helpful presentation today. I learnt quite a lot and got some great hints that will help me in future funding submissions." - Deborah Atkins*

# CORE SERVICE DELIVERY

One of Murray Arts' key roles in the community is to support artists, communities and local government to develop arts and culture in their communities. This role takes on many forms, from business and marketing advice to professional skills development. In addition, Murray Arts offers expert advice to local, state and federal government peak bodies, providing a valuable link between government and the community.

## Community Assistance Highlights

- Auspiced wages/payroll for GIG's employee
- Headlie Taylor Header Museum Henty – Assistance with their public art project
- Great River Road – Sculptural Trail – Advisory capacity
- Project Management of the 'Wild Wetlands' Project
- Presentations at Albury Rotary, Beechworth Arts Council,
- Panel member for Indigo Council Chiltern Entry Way submissions

*"Murray Arts are absolute CHAMPIONS (in the truest sense of the word) of locally created art in all its forms. The staff are totally committed to Regional Arts and helpful ideas to come to fruition. All the staff deserve massive congratulations for all their work." - Annie Rossi*

*"A valuable resource for our community. Seriously comprehensive newsletter, with support and guidance open to all art forms and stages of practice. Super approachable and knowledgeable. Yay for Murray Arts." - Rachel McNamara reviewed Murray Arts — 5 star Google Review*

## CASE STUDY | HEADLIE TAYLOR by Bruce Taylor

**Briefly describe your project and or how Murray Arts assisted you and or your organisation:**

The Headlie Taylor Bronze Sculpture was commissioned by the Headlie Taylor Header Museum, as Stage one of our Heritage Project. Murray Arts were a project partner in this commission and assisted with the development of the expression of interest for the commission, selection of an artist, contracts, Memorandum of Understanding, artist's workshop and the unveiling ceremony.

**How many people attended or participated in your project?**

The culmination of the Headlie Taylor Sculpture was the unveiling of this permanent, life size plus 10%, public art display. In excess of 500 enthusiastic supporters, friends and spectators witnessed the event. The Henty community including both local schools were well represented in a historic milestone to add to the story of the Headlie Taylor Header, through large scale public art.



Headlie Taylor Bronze Sculpture Opening

**What is your advice to other community groups who may require help with projects in the future:**

The assistance received from Murray Arts for this project was integral to the professionalism and well-ordered execution of this complex and significant, milestone occasion. I recommend reaching out to Murray Arts for involvement in any future arts projects because of their wide skills and experience.

**“NEVER IN THE FIELD OF CROP FARM ENDEAVOUR, WAS SO MUCH ACHIEVED BY JUST ONE PERSON, FOR THE BENEFIT OF SO MANY”  
- TIM FISCHER AC**

## Country Arts Support Program (CASP) 2018

In partnership with Create NSW and Regional Arts NSW, Murray Arts continue to administrate and deliver this fantastic grassroots funding round locally. In 2018 we were able to financially support:



- AlburyCity – Comic Art at Lavington Library
- Federation Council – Skylight Lantern Workshops
- Headlie Taylor Header Museum: Sculpture workshop with Paul Smits
- Livid Productions Albury: ‘Then He Came Home’ rehearsed play reading directed by Elaine Crombie, written by Leisa Whyte and featuring cast members from the Black Border Alumni
- The Other Theatre Company Albury: Auslan Interpreted performance of ‘Butterfly Lounge’

### CASP – CASE STUDY | ‘THEN HE CAME HOME’ REHEARSED PLAYREADING By Leisa Whyte

**Briefly describe your CASP funded project:**

A rehearsed play reading of my play "Then He Came Home" which was written in response to local stories of Aboriginal Soldiers returning home from WW1 & WW2. It was performed at The Hume Bank Butter Factory Theatre, on Friday 8 June 2018, to commemorate the 100th anniversary of the WWI Armistice. Acclaimed actor Elaine Crombie (ABC Black Comedy & Kiki & Kitty) made her directorial debut and the cast was made up of Black Border Alumni Theatre and other local performers. As part of the performance, we also screened the Documentary which was made in response in response to the local research of the play by Helen Newman of Nomad Films.



From left: Leisa Whyte and Elaine Crombie

**How many people attended or participated in your project?**

128 audience members for the one performance. In the cast we had 11 performers and 5 in the production/technical team.

**What did receiving CASP funding mean to you and your community group:**

It gave me the confidence to keep working on a project I felt passionate about and wanted to be shared. We were able to engage a professional director and theatre company to direct and produce the work; it gave my writing credibility

**What is your advice to other community groups applying for CASP funding in the future:**

Talk to your RADO first. You will be well supported during the submission process, which can be daunting. You don't feel so isolated and it builds your confidence. It helps you to achieve your goals and to share your project with your community. Having funding awarded for projects gives you credibility as an artist, paving the way for further opportunities.

"I'VE NEVER PAID MUCH ATTENTION TO OUR ANZAC STORY AND I FEEL ASHAMED BY THAT. THROUGH DOING THIS STORY AND DEDICATING MY TIME TO 'THEN HE CAME HOME' I'VE DEVELOPED A DEEPER UNDERSTANDING AND HAVE COME TO REALISE THAT IT'S ALL CONNECTED OUR STORY AND HISTORY. WHITE AUSTRALIA HAS A BLACK HISTORY AND OUR BLACK DIGGERS ARE A BIG PART OF OUR STORY AS BLACKFELLAS, WITHIN THAT." - DIRECTOR ELAINE CROMBIE (PITJANJTARRA, WARRIGMAL & SOUTH SEA ISLANDER WOMEN)

THEN  
HE  
CAME  
HOME



08-06-18



Left: 'Then He Came Home' event poster. Right: Cast and crew first table read



---

# INTERNAL OPERATIONS AND STAFFING

## **Staff Professional Development**

We are very lucky to be surrounded by a wealth of knowledge and expertise from the abundance of Creatives within the Murray Arts Footprint. This came in very handy when our small team needed to brainstorm out options for the burraja gallery renovation. Thank you to everyone who dropped in, offered their advice, assisted with tools, time & strength. A big thank you to Marley Dawson who came to our aid by offering a very tailored hands on workshop about how to hang artefacts.

In 2018 Bethany Thornber & Alyce Fisher were able to attend the Regional Arts Development Conferences ArtLands in Bendigo and ArtState in Tamworth. We were able to receive subsidy's, for Bethany, from Regional Arts Australia and Create NSW so that she could attend both conferences.

The Regional Arts NSW Network meet up 3 times a year, in Sydney, to discuss opportunities for the network, share our challenges and to be presented too by metropolitan based organisations interested in engaging with the NSW Regional Arts Development Organisations.

Murray Arts staff and board members participated in the Australia Council 1 Day Governance training held in Albury, Tiffany and Alyce both sat on Creative Victoria Funding Assessment panels, Bethany attended the Create NSW Cultural Exchange in Bathurst and Kellie attended a local Communications Networking meeting.

## **Recruitment**

In 2018 we recruited for the positions of:

- Murray Arts Board Members
- Murray Arts Strategic Advisory Council Members
- Communications Officer

The shift to a Skills-Based Board gave us the opportunity to put the call out for new Board Members and we welcomed Rachael Gadd, Donna Caffery, Richard Hull and David Gordon into the fold. We also initiated the launch of the Murray Arts Strategic Advisory Committee (MASAC) and were able to welcome Gail Law, Simone Hogg, Julia Simpson, Dr Treahna Hamm and Daren Pope into the mix. In August we sadly bid farewell to our Communications Officer Kellie Sutherland and were very lucky to have Julianna Toth swiftly step in as her replacement in September.

## Finance

Murray Arts is a service organisation which is 100% reliant on Funding to keep our doors open. It means our time is taken up with writing and acquitting many grants from numerous sources. Our aim is to be able to deliver more projects that are not reliant on funding. Billet-Doux achieved this aim in 2018, as we were able to use the entry fees earned from the Art-Prize and the 20% commission on all artwork sold, to cover the costs of the project. 2018 saw us dramatically increase our Program/Project income by 235% from 2017 and burraja gallery sales achieved an overwhelming 173% increase in total sales. All this is great news for our local Artists, as it has meant that we have been able to employ so many of our very talented local Creatives in our 2018 program. We achieved a healthy surplus of \$6,388.44 and our reserves have continued to grow. Overall Murray Arts is a healthy financial position despite being on stagnate Core funding for the past 6+ years.

The Full 2018 Murray Arts Audited Financials are available to view via our website.



Murray Arts Staff on 'Team Away Day' at Henty Creative Gallery

# FUNDING AND PROJECT PARTNERS

Many thanks to our funding and project partners.

## Core Funding Partners



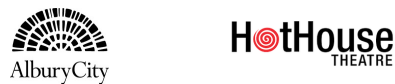
## School Drama™



## Beyond YOLO



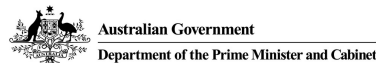
## A Month in the Country



## LIMELIGHT: Art. Science. Light.



## Kinder Kulture



## Country Arts Support Program



## Employment Funding



## Other Project Partners and collaborators





44-46 Lincoln Causeway Gateway Island Wodonga  
PO Box 7142 Albury NSW

(02) 6021 5034

[www.murrayarts.org.au](http://www.murrayarts.org.au)  
[www.burrajagallery.org.au](http://www.burrajagallery.org.au)



@murrayartsdevelopment  
@burrajagallery



@murrayarts  
@burraja\_gallery



@murrayarts  
@burrajagallery



/company/murrayarts  
/company/burrajagallery